

PaintView SOFTWARE

Grant
DATA LOGGING

PaintView is an easy to use software package designed for exclusive use in the paint and finishing industry and is included **FREE** with every OQ610 temperature logger. It enables easy setup of your logger and automatic download of your data from the logger into a meaningful measure of paint cure. For advanced paint cure calculations, it can also provide rapid interpretation of results. PaintView also gives you the additional benefits of graphically analysing your historical and on-line data, along with advanced reporting.

Free
Technical
Helpline

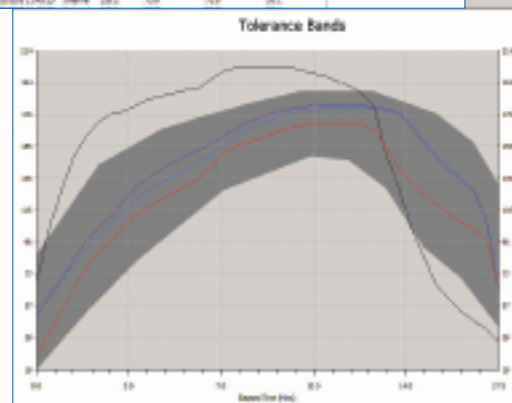
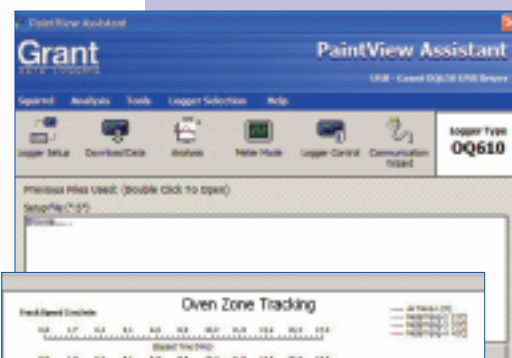
Key Features

- User friendly spreadsheet style software for exclusive use in paint curing applications
- PaintView offers the choice of the Grant 'classic cure' and 'area integration' cure analysis methods
- A database can be built of different paint types from various paint manufacturers
- PaintView provides zones for optimal paint stoving in your process
- With regular usage the software can pinpoint any uneven temperatures within the stoving process
- The tolerance curve feature gives the ability to draw your ideal curve and check that your data fits
- Easily view and control the logger status from one single screen
- Security function protects your data and setup configurations
- The graphing feature within the software offers fully annotated curves, zoom and cursor scrolling analysis
- All settings can be saved for efficient reuse
- The report generator can provide standard reports on all functions of the curing process to provide your customers with proof of compliance to their stoving requirement
- Export data into Excel or as a CSV file for customisable data analysis

PaintView Applications

PaintView is suitable for use in a number of applications including:

- Household appliance manufacturers
- Office furniture finishing
- Automotive manufacturers
- Vehicle component finishers
- Oven manufacturers
- Coating and paint suppliers
- Architectural finishing



www.grant.co.uk

PaintView SOFTWARE



System Specification

SETUP

- Setup can be verified before it is sent to the logger
- Converts setup files from previous SquirrelView or PaintView software
- Report options for data presentation
- Hide facility allows you to tailor setup interface to your own requirements
- Printer setup information
- Facility to setup templates

METER MODE

- Displays up to 6 channels
- 3 Plot types: line graphs, gauges & dials
- Autoscaling: X and Y axis
- Value readout: cursor position
- Saves metered data for re-use in other software packages
- Graph printout facility
- Graph can be presented in various styles

DOWNLOAD

- Download straight to a graph
- Download directly as a CSV file

EXPORT

- Easy to use export wizard
- Customisable data export for Excel, Lotus or other applications
- Export viewer allows quickview facility of data format

ADDITIONAL FEATURES

- Tips of the day - provides informative shortcuts
- Logger diagnostics
- Security feature enables password setup
- Communication wizard enables easy setup of USB
- Interactive Help

ANALYSIS

- Easy analysis for OQ series loggers
- Easy to use Explorer style interface
- Fully configurable data views
- Creation of templates
- Flexibility for customisable reports
- Facility to include text comments with graphs
- Flexible zoom feature including X and Y axis
- Statistics calculator
- Autoscaling of Y axis
- Value readout at cursor position
- High and low level thresholds
- Report facility: prints out graphs, readings, etc
- Tolerance curve
- Oven profile
- Calculated channels
- User notes
- Archives
- File convertor from Paintwise and Squirrelwise
- Product cure calculation
- Append/add datafiles
- Run creator, extracting and joining data by time

SPECIFICATIONS

Minimum computer requirements:

- Windows 98SE, 2000, XP
- Pentium II 266 MHz
- RAM as specified by PC operating system
- 60 Mb hard disk space and 1 CD drive
- Colour SVGA monitor running at 800 x 600 (1024 x 768 recommended)
- USB port
- Mouse

Due to our policy of continuous improvements, specifications may change without prior notice. Grant believes that all information declared is correct at the time of issue. No liability is accepted for errors and omissions.



**Grant Instruments
(Cambridge) Ltd**
Shepreth
Cambridgeshire
SG8 6GB England

Tel: +44 (0) 1763 260811
Fax: +44 (0) 1763 262410
www.grant.co.uk
loggersales@grant.co.uk

Printed in England-PaintView/0605UK/V2

Quality Statement: Grant Instruments operates a Quality Management System complying with ISO9001:2000. It is Grant's policy to supply customers with products which are fit for their intended purpose, safe in use, perform reliably to published specification and are backed by a fast and efficient customer support service.

Manufactured and designed in Cambridge, England.