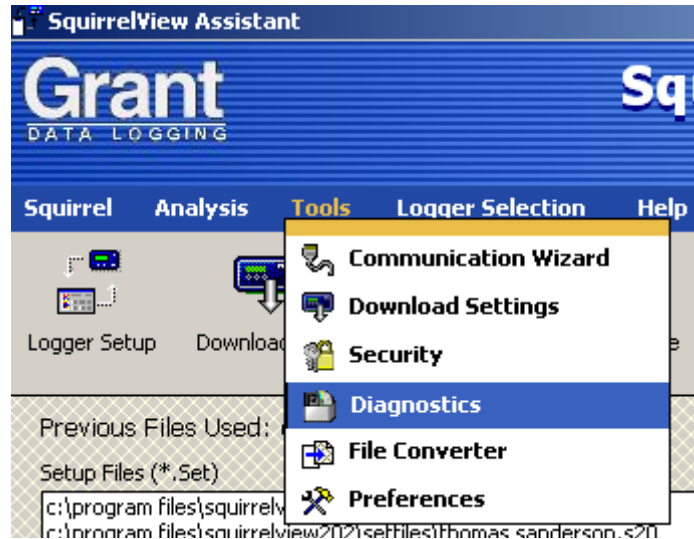
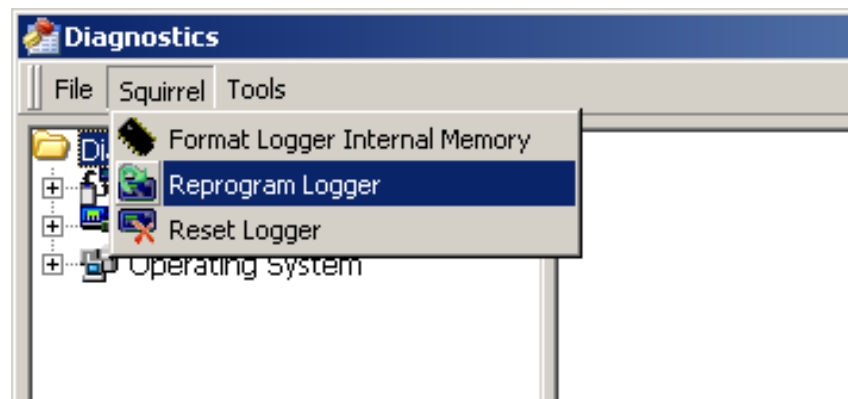


Re-program Logger Firmware

Re-program Control and Acquisition firmware as follows:
From the SquirrelView software click on *Tools and Diagnostics*



When the Diagnostics box comes up click on *Squirrel and Reprogram Logger*



For the **SQ20xx** Loggers reprogramming is done via a wizard, the logger **must** be connected at all times during the upgrade.

The first stage SquirrelView will check that the logger is capable of being reprogramming, if this fails please contact the Grant technical support for help. acquisitiontech@grant.co.uk

The next stage, the reprogramming location needs to be provided, using the browse button find the location of the firmware for the type of logger being updated.

Note: SQ2010 has a different location to the SQ2020/2040

Grant Instruments
(Cambridge) Ltd
Shepreth
Cambridgeshire
SG8 6GB

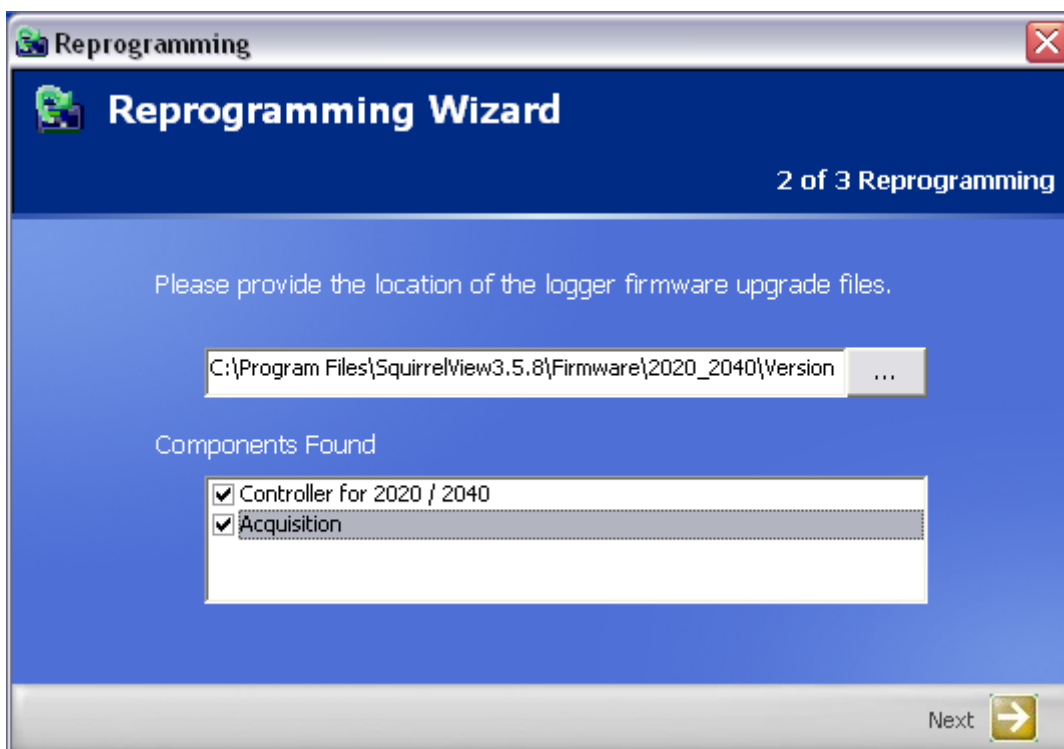
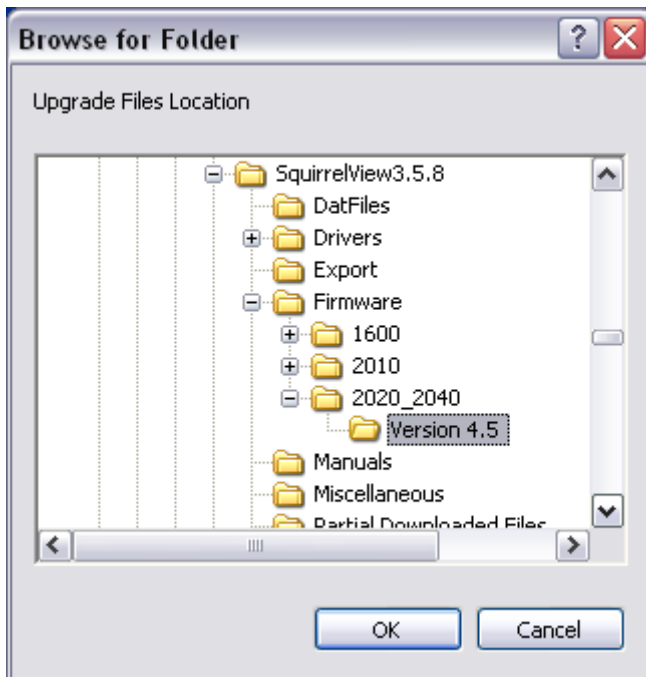
Tel: 01763 260811
Fax: 01763 262410
www.grant.co.uk

Reference No: MF 0309

DATA ACQUISITION

Hints and Tips

Once the location is found the firmware components will be displayed in the *Components Found* window.



Note: the Controller firmware will have the logger type it is supporting beside it. Select the firmware components you wish to update and click *Next*.

The process of reprogramming the logger firmware will begin. Once the reprogramming process has taken place, click *Finish*. The logger will reset itself, which will take approximately 30 seconds.